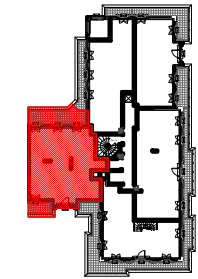


BATIMENT B





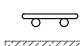



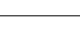

LOGEMENT 4 PIECES

LOGEMENT	BATIMENT	ETAGE	APPART.
B545	B	5	5

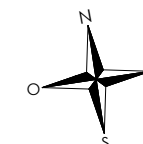
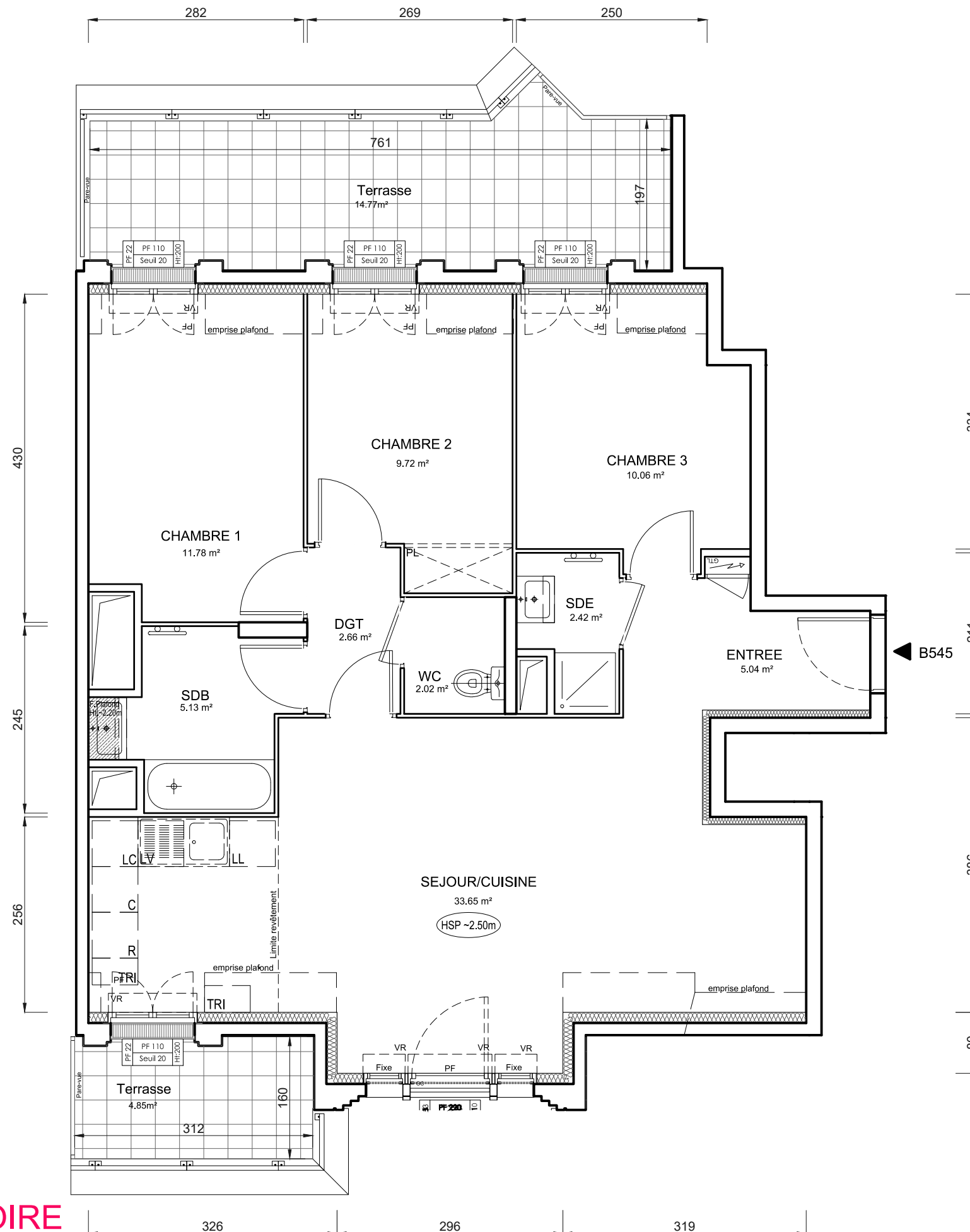
SEJOUR / CUISINE	33,65 m ²
ENTREE	5,04 m ²
CHAMBRE 1	11,78 m ²
CHAMBRE 2	9,72 m ²
CHAMBRE 3	10,06 m ²
SDB	5,13 m ²
SDE	2,42 m ²
DGT	2,66 m ²
WC	2,02 m ²
SURFACE TOTALE HABITABLE PREVISIONNELLE	82,48 m²
TERRASSE	19,62 m ²
SURFACE TOTALE PRIVATIVE PREVISIONNELLE	102,10 m²

LEGENDE :

- PF : Porte fenêtre
- AV : Allège vitrée
- F : Fenêtre
- VR : Volet roulant
- VB : Volet battant
- GC : Garde corps
- PV : Pare vue
- R : Réfrigérateur
- LL : Lave linge
- LV : Lave vaisselle
- C : Cuisson
- LC : Linéaire complémentaire
- TRI : Tri sélectif
- RP : Robinet de puisage

-  Placard
-  Tableau électrique
-  Sèche serviette
-  Soffite
-  Faux plafond
-  Poutre
-  Cloison fusible
-  Gravillon

PROVISOIRE



INDICE : MODIFIÉ LE :
DATE : 15/01/2024 ECHELLE :

