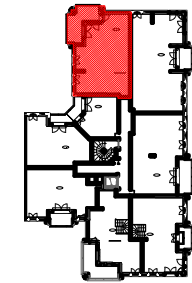


LE BLANC MESNIL

BATIMENT B



ETAGE 2

LOGEMENT 3 PIECES









LOGEMENT	BATIMENT	ETAGE	APPART.
B232	B	2	2

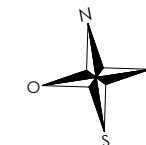
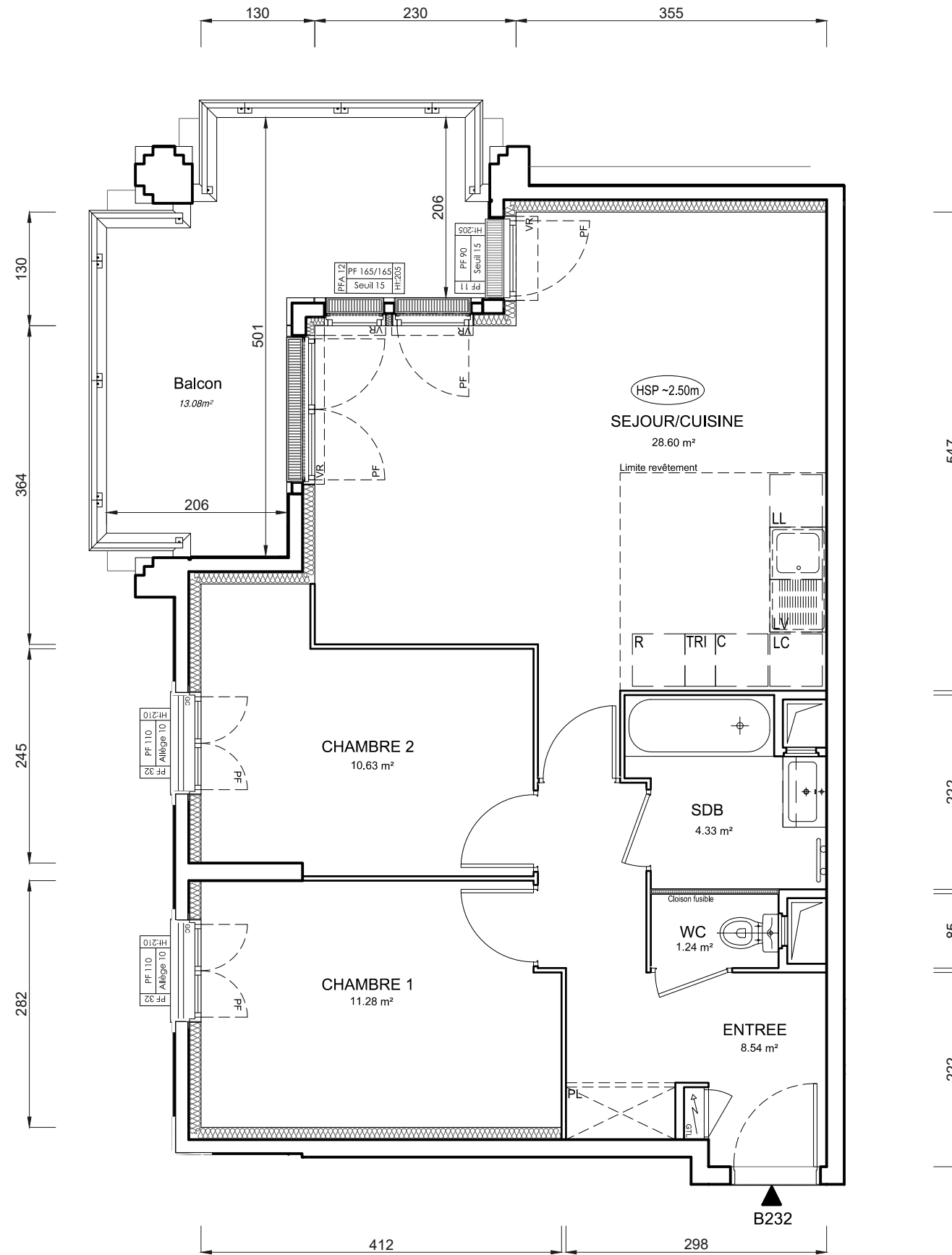
SEJOUR / CUISINE	28,60 m ²
ENTREE	8,54 m ²
CHAMBRE 1	11,28 m ²
CHAMBRE 2	10,63 m ²
SDB	4,33 m ²
WC	1,24 m ²
SURFACE TOTALE HABITABLE PREVISIONNELLE	64.62 m²
BALCON	13,08 m ²
SURFACE TOTALE PRIVATIVE PREVISIONNELLE	77.70 m²

PROVISOIRE

LEGENDE :

- PF : Porte fenêtre
- AV : Allège vitrée
- F : Fenêtre
- VR : Volet roulant
- VB : Volet battant
- GC : Garde corps
- PV : Pare vue
- R : Réfrigérateur
- LL : Lave linge
- LV : Lave vaisselle
- C : Cuisson
- LC : Linéaire complémentaire
- TRI : Tri sélectif
- RP : Robinet de puisage

-  Placard
-  Tableau électrique
-  Sèche serviette
-  Soffite
-  Faux plafond
-  Poutre
-  Cloison fusible
-  Gravillon



INDICE : MODIFIÉ LE :
DATE : 15/01/2024 ECHELLE :

