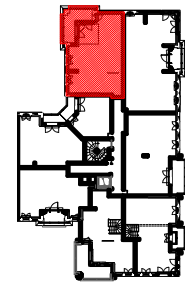


LE BLANC MESNIL

BATIMENT B



ETAGE 4


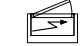


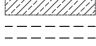



LOGEMENT 3 PIECES

LOGEMENT	BATIMENT	ETAGE	APPART.
B432	B	4	2

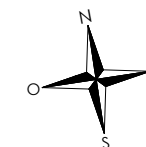
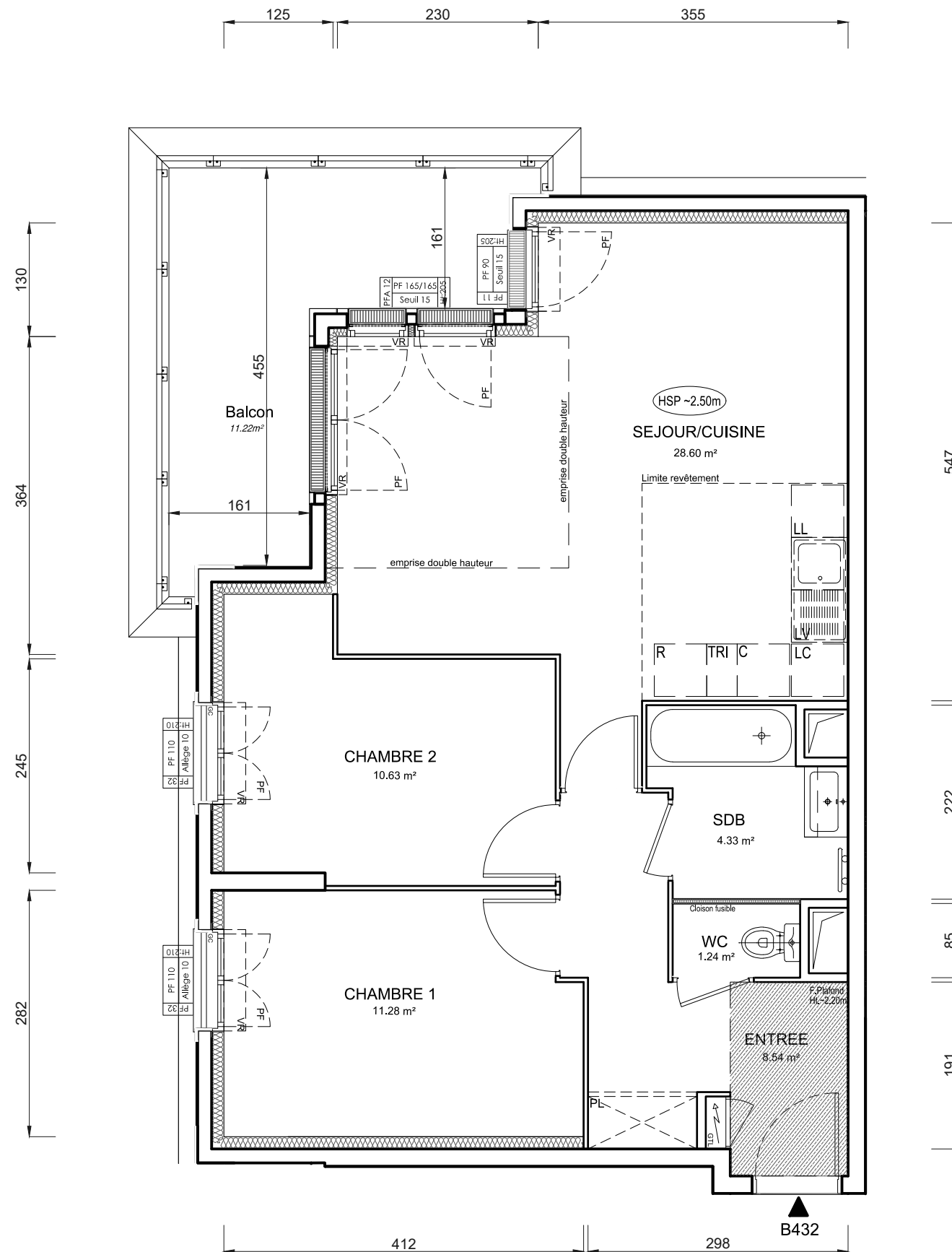
SEJOUR / CUISINE	28,60 m <sup>2</sup>
ENTREE	8,54 m <sup>2</sup>
CHAMBRE 1	11,28 m <sup>2</sup>
CHAMBRE 2	10,63 m <sup>2</sup>
SDB	4,33 m <sup>2</sup>
WC	1,24 m <sup>2</sup>
<b>SURFACE TOTALE HABITABLE PREVISIONNELLE</b>	<b>64.62 m<sup>2</sup></b>
BALCON	11,22 m <sup>2</sup>
<b>SURFACE TOTALE PRIVATIVE PREVISIONNELLE</b>	<b>75.84 m<sup>2</sup></b>

LEGENDE :

- PF : Porte fenêtre
- AV : Allège vitrée
- F : Fenêtre
- VR : Volet roulant
- VB : Volet battant
- GC : Garde corps
- PV : Pare vue
- R : Réfrigérateur
- LL : Lave linge
- LV : Lave vaisselle
- C : Cuisson
- LC : Linéaire complémentaire
- TRI : Tri sélectif
- RP : Robinet de puisage

-  Placard
-  Tableau électrique
-  Sèche serviette
-  Soffite
-  Faux plafond
-  Poutre
-  Cloison fusible
-  Gravillon

**PROVISOIRE**



INDICE :                      MODIFIÉ LE :  
DATE : 15/01/2024        ECHELLE :

