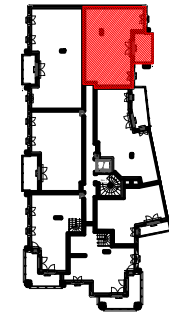


LE BLANC MESNIL

BATIMENT D



ETAGE 3

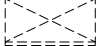
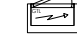

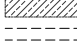



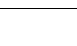
LOGEMENT 3 PIECES

LOGEMENT	BATIMENT	ETAGE	APPART.
D336	D	3	6

SEJOUR / CUISINE	25,63 m ²
ENTREE	5,28 m ²
CHAMBRE 1	13,73 m ²
CHAMBRE 2	10,78 m ²
WC	1,26 m ²
SDB/WC	5,70 m ²
DGT	1,56 m ²
SURFACE TOTALE HABITABLE PREVISIONNELLE	63,94 m²
BALCON (TOTAL)	9,13 m ²
SURFACE TOTALE PRIVATIVE PREVISIONNELLE	73,07 m²

LEGENDE :

- PF : Porte fenêtre
- AV : Allège vitrée
- F : Fenêtre
- VR : Volet roulant
- VB : Volet battant
- GC : Garde corps
- PV : Pare vue
- R : Réfrigérateur
- LL : Lave linge
- LV : Lave vaisselle
- C : Cuisson
- LC : Linéaire complémentaire
- TRI : Tri sélectif
- RP : Robinet de puisage

-  Placard
-  Tableau électrique
-  Sèche serviette
-  Soffite
-  Faux plafond
-  Poutre
-  Cloison fusible
-  Gravillon

PROVISOIRE

