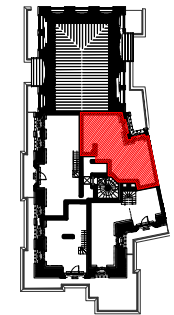


LE BLANC MESNIL

BATIMENT D

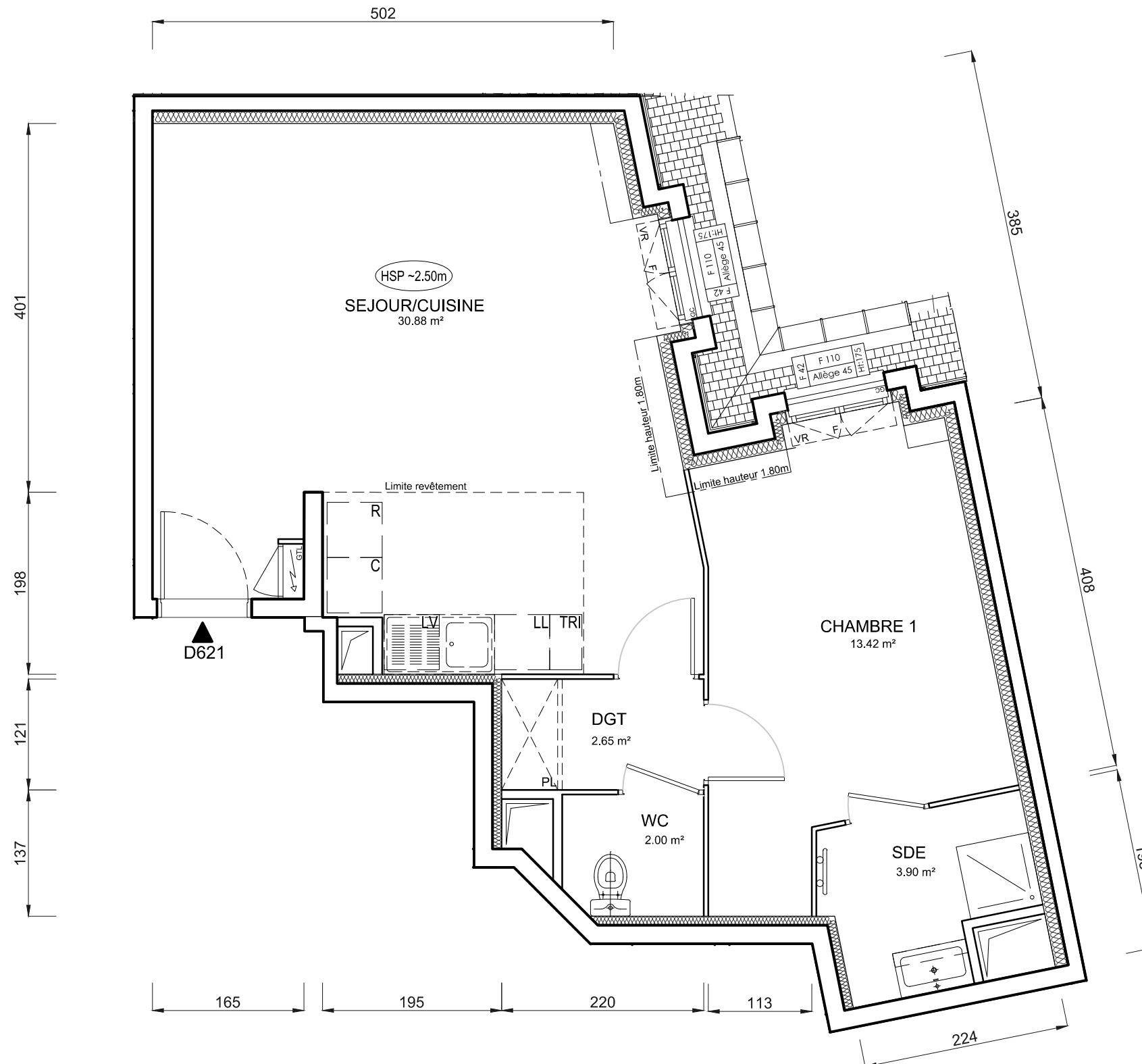


ETAGE 6

LOGEMENT 2 PIECES

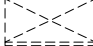
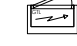
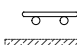
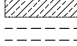



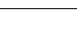
LOGEMENT	BATIMENT	ETAGE	APPART.
D621	D	6	1

	S. carrez	S. au sol
SEJOUR / CUISINE	30,88 m ²	31,58 m ²
CHAMBRE 1	13,42 m ²	13,81 m ²
SDE	3,90 m ²	3,90 m ²
DGT	2,65 m ²	2,65 m ²
WC	2,00 m ²	2,00 m ²
SURFACE TOTALE HABITABLE PREVISIONNELLE	52,85 m²	53,94 m²

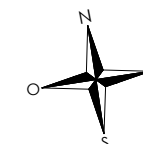


LEGENDE :

- PF : Porte fenêtre
- AV : Allège vitrée
- F : Fenêtre
- VR : Volet roulant
- VB : Volet battant
- GC : Garde corps
- PV : Pare vue
- R : Réfrigérateur
- LL : Lave linge
- LV : Lave vaisselle
- C : Cuisson
- LC : Linéaire complémentaire
- TRI : Tri sélectif
- RP : Robinet de puisage

-  Placard
-  Tableau électrique
-  Sèche serviette
-  Soffite
-  Faux plafond
-  Poutre
-  Cloison fusible
-  Gravillon

PROVISOIRE



INDICE : MODIFIÉ LE :
DATE : 15/01/2024 ECHELLE :

