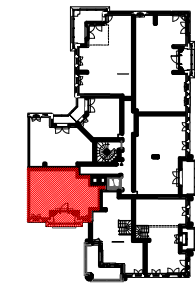


LE BLANC MESNIL

BATIMENT B

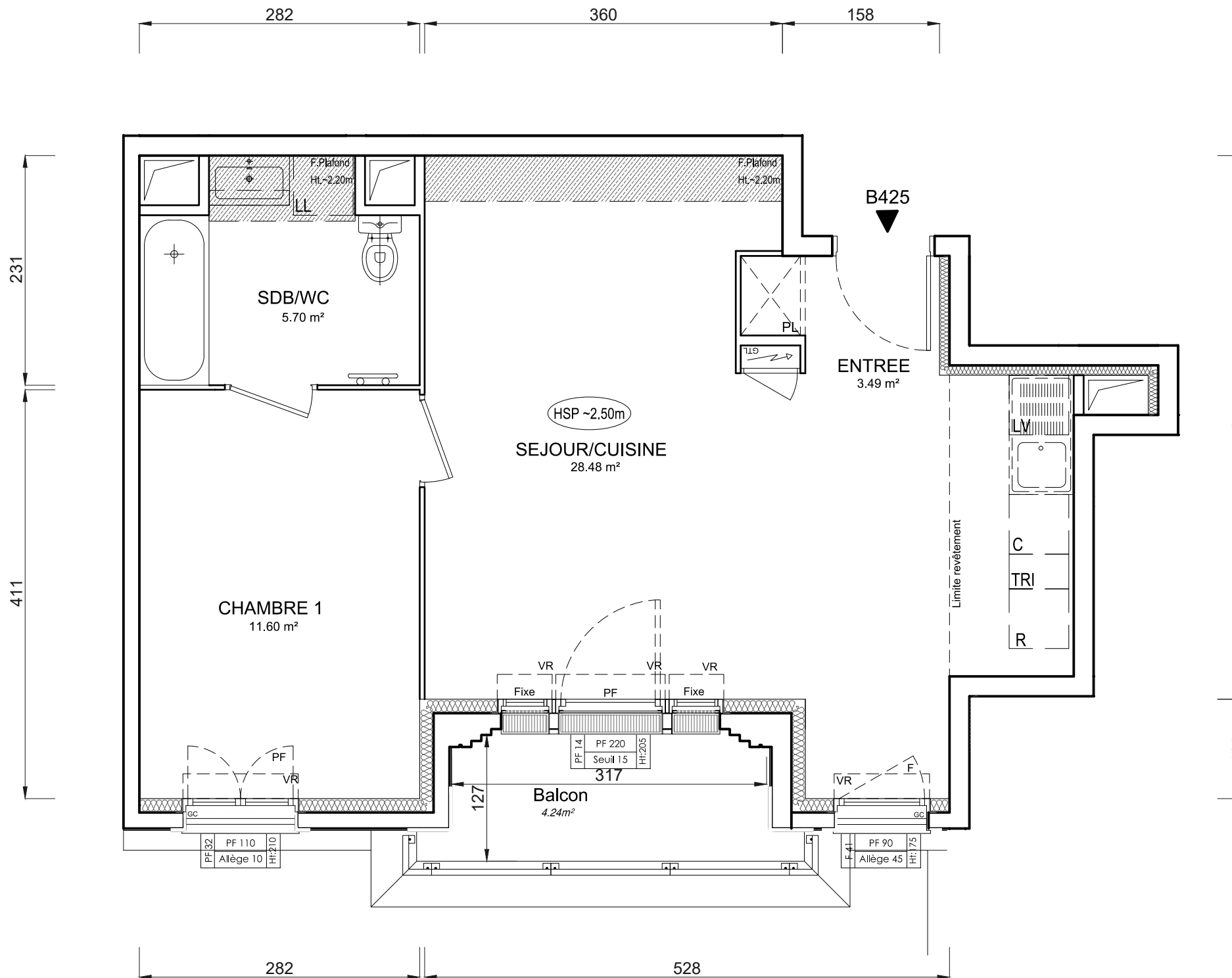


ETAGE 4



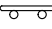

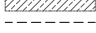



LOGEMENT 2 PIECES

LOGEMENT	BATIMENT	ETAGE	APPART.
B425	B	4	5

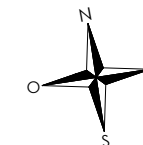
SEJOUR / CUISINE	28,49 m ²
ENTREE	3,49 m ²
CHAMBRE	11,60 m ²
SDB/WC	5,70 m ²
SURFACE TOTALE HABITABLE PREVISIONNELLE	49.28 m²
BALCON	4,24 m ²
SURFACE TOTALE PRIVATIVE PREVISIONNELLE	53.52 m²



- LEGENDE :
- PF : Porte fenêtre
 - AV : Allège vitrée
 - F : Fenêtre
 - VR : Volet roulant
 - VB : Volet battant
 - GC : Garde corps
 - PV : Pare vue
 - R : Réfrigérateur
 - LL : Lave linge
 - LV : Lave vaisselle
 - C : Cuisson
 - LC : Linéaire complémentaire
 - TRI : Tri sélectif
 - RP : Robinet de puisage

-  Placard
-  Tableau électrique
-  Sèche serviette
-  Soffite
-  Faux plafond
-  Poutre
-  Cloison fusible
-  Gravillon

PROVISOIRE



INDICE : MODIFIÉ LE :
DATE : 15/01/2024 ECHELLE :

