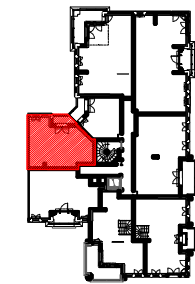


LE BLANC MESNIL

BATIMENT B



ETAGE 4

LOGEMENT 2 PIECES

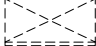

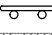

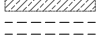



LOGEMENT	BATIMENT	ETAGE	APPART.
B426	B	4	6

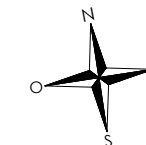
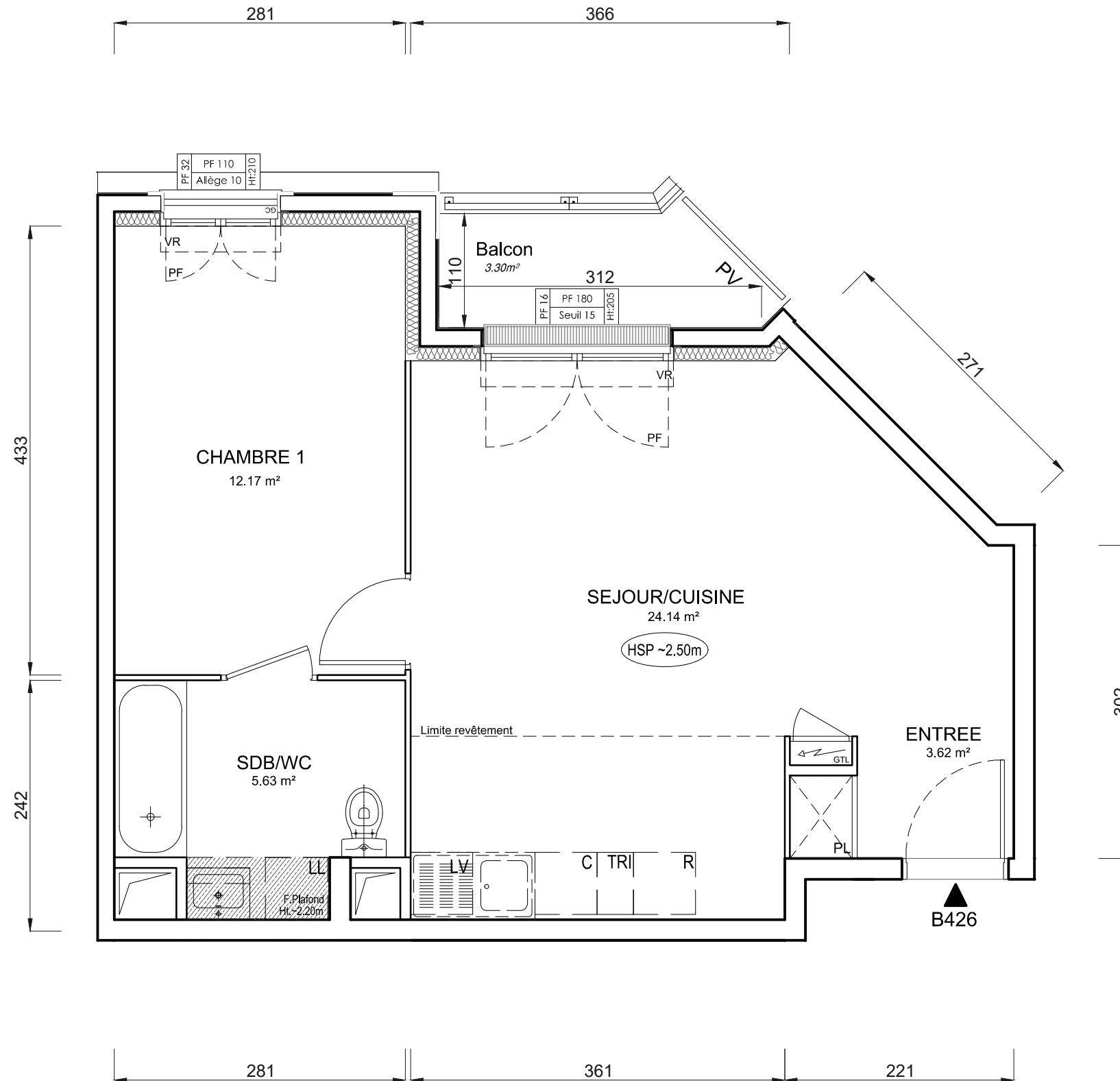
SEJOUR / CUISINE	24,14 m ²
ENTREE	3,62 m ²
CHAMBRE	12,17 m ²
SDB/WC	5,63 m ²
SURFACE TOTALE HABITABLE PREVISIONNELLE	45.56 m²
BALCON	3,30 m ²
SURFACE TOTALE PRIVATIVE PREVISIONNELLE	48.86 m²

PROVISOIRE

LEGENDE :

- PF : Porte fenêtre
- AV : Allège vitrée
- F : Fenêtre
- VR : Volet roulant
- VB : Volet battant
- GC : Garde corps
- PV : Pare vue
- R : Réfrigérateur
- LL : Lave linge
- LV : Lave vaisselle
- C : Cuisson
- LC : Linéaire complémentaire
- TRI : Tri sélectif
- RP : Robinet de puisage

-  Placard
-  Tableau électrique
-  Sèche serviette
-  Soffite
-  Faux plafond
-  Poutre
-  Cloison fusible
-  Gravillon



INDICE : MODIFIÉ LE :
DATE : 15/01/2024 ECHELLE :

