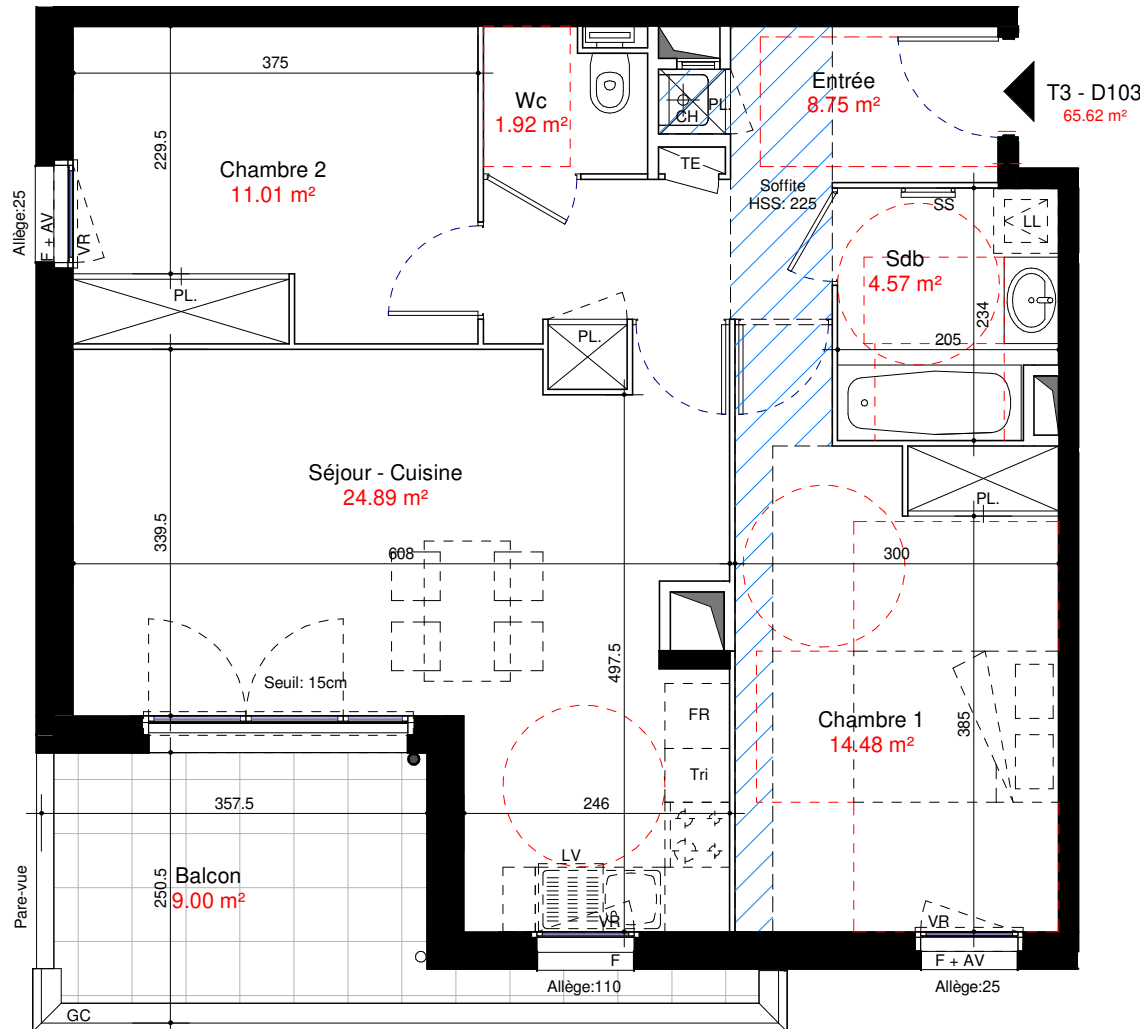








Bâtiment D R+1 **D103 - T3**

Entrée	8.75 m ²
Séjour - Cuisine	24.89 m ²
Chambre 1	14.48 m ²
Chambre 2	11.01 m ²
Sdb	4.57 m ²
Wc	1.92 m ²
Surface habitable :	65.62 m ²
Balcon	9.00 m ²

19.01.2022



LEGENDE

PF	Porte-fenêtre		Faux-plafond, Soffite	LV	Lave-vaisselle
F	Fenêtre		Tableau électrique	F	Réfrigérateur
AV	Allège vitrée		Cloison démontable	LL	Lave-linge
VR	Volet roulant		ECS	SS	Sèche-serviettes
AB	Abattant		CH	GC	Garde-corps
Opal	Vitrage opalin		PL		

Hauteur sous plafond des pièces sauf faux-plafond, sauf mention particulière: 2.50m

