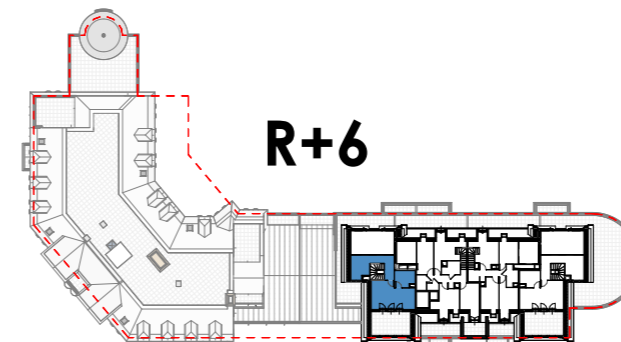
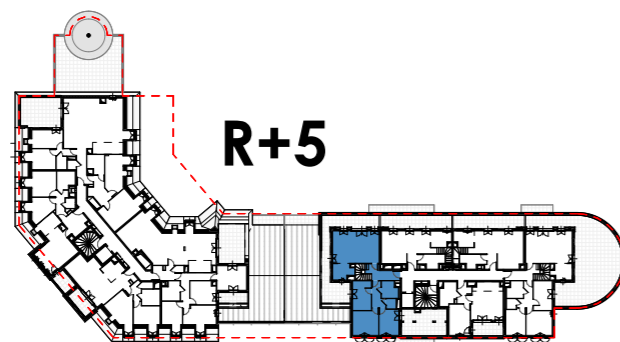
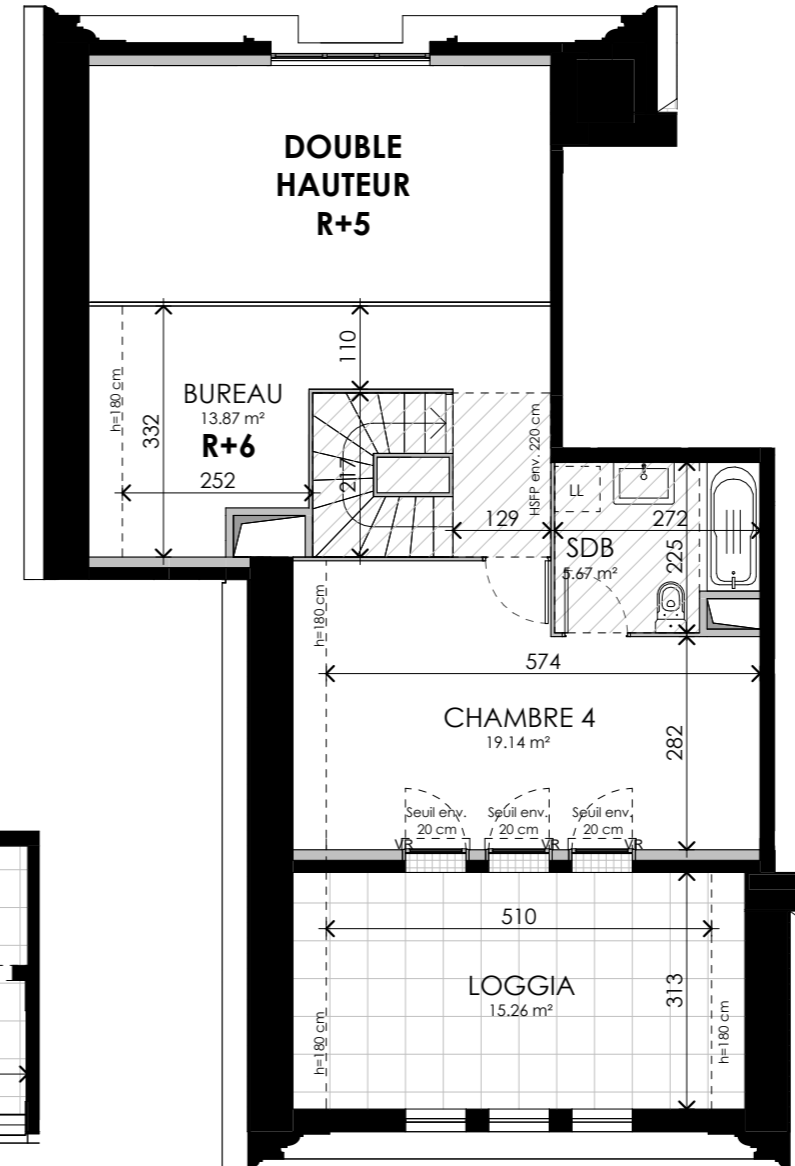
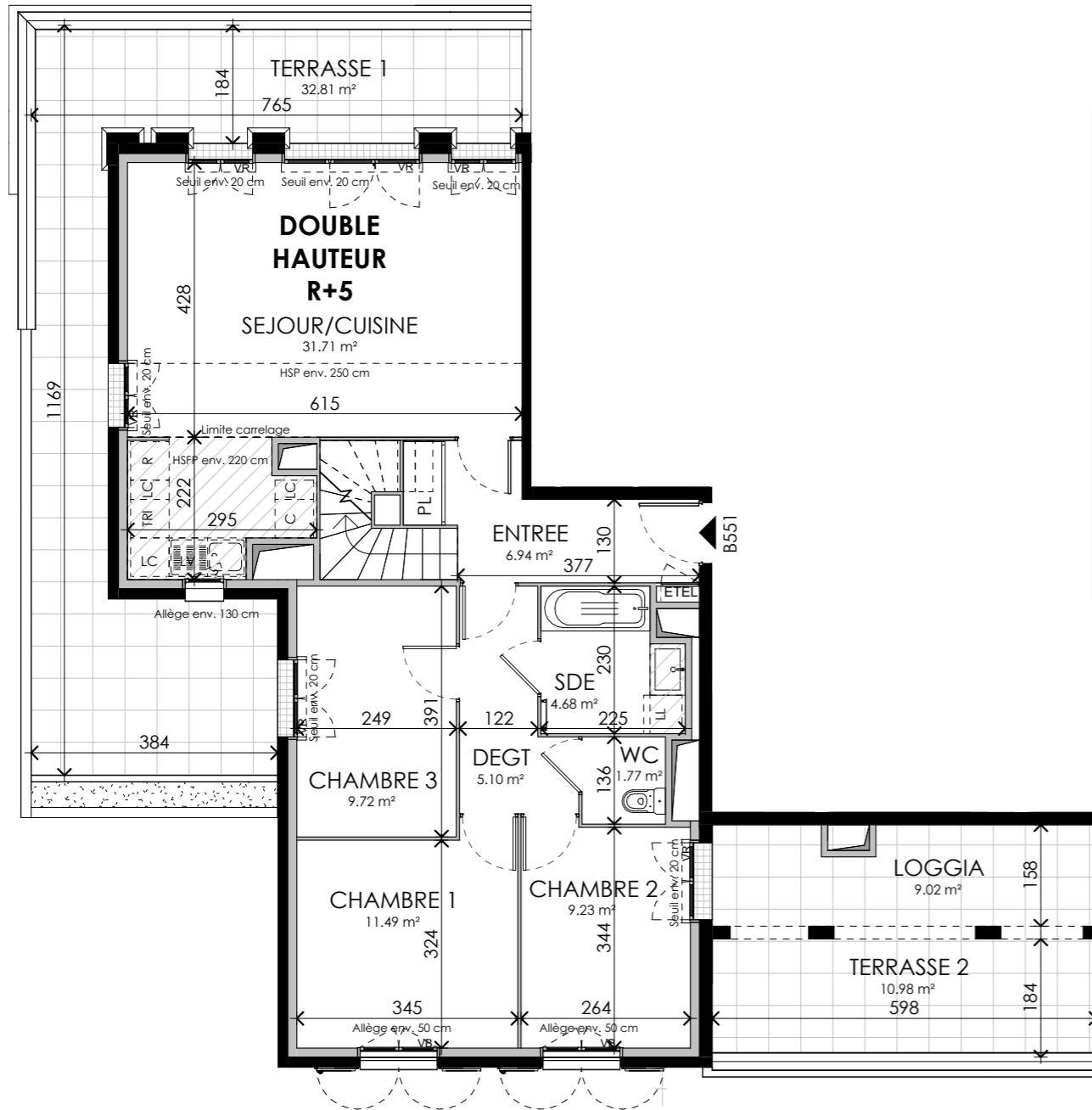
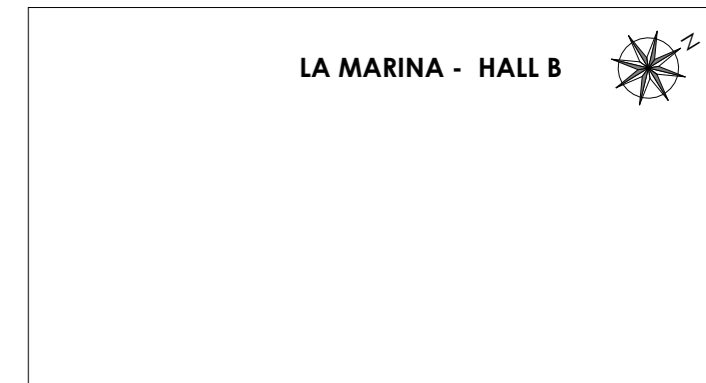




**PROVISOIRE**



Seine Parisii - LOT 6  
Route de Seine - Ville de Cormeilles-en-Parisis



TPOLOGIE	ETAGE	LOGEMENT
T5	R+5 et R+6	B551

ENTREE	6.94 m²
SEJOUR/CUISINE	31.71 m²
CHAMBRE 1	11.49 m²
CHAMBRE 2	9.23 m²
CHAMBRE 3	9.72 m²
CHAMBRE 4	19.14 m²
BUREAU	13.87 m²
SDE	4.68 m²
SDB	5.67 m²
WC	1.77 m²
DEGT	5.10 m²
<b>SURFACE TOTALE HABITABLE</b>	<b>119.32 m²</b>
LOGGIA	9.02 m²
LOGGIA	15.26 m²
TERRASSE 1	32.81 m²
TERRASSE 2	10.98 m²
<b>SURFACE TOTALE PRIVATIVE</b>	<b>187.39 m²</b>

**LEGENDE :**

LV	LAVE-VAISSELLE	LL	LAVE-LINGE
TRI	TRI SELECTIF	PL	PLACARD
R	REFRIGERATEUR	ETEL	GAINTE TECHNIQUE ELECTRIQUE
C	PLAQUE DE CUSSION	VR	VOLET ROULANT
LC	LINEARE COMPLEMENTAIRE	VB	VOLET BATTANT
HSP	HAUTEUR SOUS PLAFOND	HSFP	HAUTEUR SOUS FAUX-PLAFOND
	SOFFITE/FAUX PLAFOND	- - - -	RETOMBEE DE POUTRE